



91 Beaumont Drive

Cherry Lodge, Northampton

oriordanbond
SALES & LETTINGS



91 Beaumont Drive

Cherry Lodge

NN3 8PS

GUIDE PRICE £189,995

INVESTOR PURCHASE ONLY - A well maintained two bedroom end terrace property situated in a cul-de-sac location within the popular Cherry Lodge area.

The accommodation comprises entrance hall, re-fitted kitchen, sitting/dining room, two bedrooms and a re-fitted bathroom. Outside is an enclosed rear garden and off road parking for one car to the front. Further benefits include uPVC double glazing and gas radiator heating. (A/721/S)

Additional information

- Council Tax Band: B
- Energy Efficiency Rating: C

Viewing

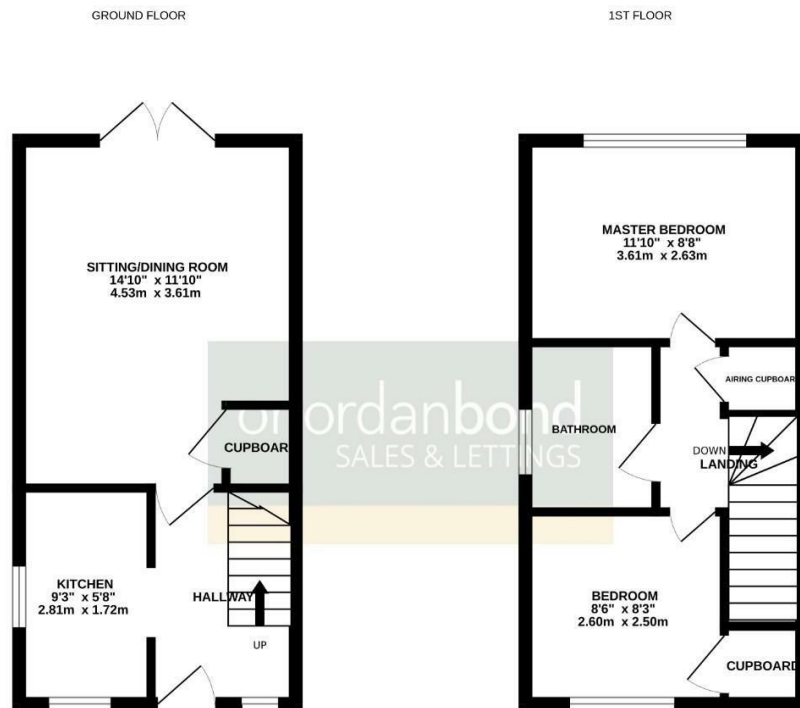
Viewing strictly by appointment – details below

Disclaimer

O'Riordan Bond Estate Agents Limited has not tested apparatus, equipment, fittings or services and so cannot verify they are in working order. The buyer is advised to obtain verification from their solicitor or surveyor.

O'Riordan Bond Weston Favell Sales
01604 784007

westonfavell@oriordanbond.co.uk



TOTAL FLOOR AREA: 721sq. ft. (67.0 sq.m.) approx.
Whilst every attempt has been made to ensure the accuracy of the description contained here, measurements of doors, windows, rooms and any other items are approximate and no responsibility is taken for any error, omission or mis-statement. This plan is for illustrative purposes only and should be used as such by any prospective purchaser. The services, systems and appliances shown have not been tested and no guarantee as to their suitability or efficiency can be given.
Made with Metrepro 02023